



SILICE EVO

Number One TUV Medical CE Approved
Four Handpieces Work Simultaneously
Fat Freezing Technology





Why is SILICE Evo Unique?

Freeze Stubborn Fat Away, Say NO to Surgery

The Cool fat freezing procedure is clinical proved and contours the body by safely and effectively freezing away unwanted fat for good without surgery or downtime.

Sit Back, Relax, and Say Goodbye to Stubborn Fat

After you and your physician select the area(s) to be treated, the device is positioned on your body and controlled cooling is applied. During your procedure, feel free to read, check email, or even take a nap.

Reshape Your Body

You can reduce fat on multiple areas of your body with the Cool procedure, and additional sessions will further enhance your results. Your provider will help you create an individualized treatment plan tailored just for you.

After Your Cool-Shaping Session

The Cool fat freezing procedure is completely non-surgical, so you can typically return to normal activities immediately.

Patented four handpieces could work
Simultaneously for 1-4 area.



SILICE EVO

It is equipped with four handle dimensions to facilitate the treatment of different parts of the body.



Technology behind Cool ?

Cool machine safely delivers precisely controlled cooling to gently and effectively target the fat cells underneath the skin. The treated fat cells are crystallized (frozen), then die. Over time, your body naturally processes the fat and eliminates these dead cells, leaving a more sculpted you.

How the SILICE Evo Procedure Freezes Fat Cells

- ✓ Many of us have stubborn fat despite diet and exercise.
- ✓ Cool technology uses controlled cooling (Cryolipolysis) to target and kill only these fat cells. In the weeks to follow, these fat cells are naturally eliminated from the body.
- ✓ Treated fat cells, once eliminated from the body, are gone for good.

Why SILICE EVO Cool-Shaping unique?

- ✓ Innovative preheating mode will accelerate blood circulation and metabolism, which will replace massage on hands. Much more save your beauticians fatigue.
- ✓ Integrated vacuum, freezing and infrared light three technologies in one. Three ergonomic handle pieces (220*80mm & 160*60mm & 130*50mm&80*40mm) for different areas.
- ✓ Our Patent Human-based software, we keep innovating for best clients experience.
 - Infrared light (37°-42°) pre-operation warm for accelerating blood circulation;
 - Cool-Shaping with pulsed vacuum massage or consist cooling;
 - Gradual suck and loose instead of sharp vacuum treatment and one-minute alarm advance when treatment time done;
 - Emergency wire could be held within clients hands, instant stop could be triggered due to any uncomfortable ;
- ✓ Per handpiece-4 dual-layer cooling chip (prior to single layer chip), ensuring the cooling temperature to -18°C , for safe, we limit temp. up to -11°C (at least 4 times life-span longer than similar products in the market)
- ✓ China Only dual separated controlling systems (double pump and power supply for two channels) , very durable.
- ✓ External filters and self-cleaning system are very convenient for maintenance, no need to open the shell for cleaning.
- ✓ Cool-Shaping TUV medical CE cleared, higher safe standard.



Cool-Shaping

From the clinical results, Cool-Shaping can reshape body effectively. The initial results can be seen as soon as two-three weeks. The most dramatic effect will be in the following two months. But the body will still flush out the treated fat cells up to half year after the treatment.

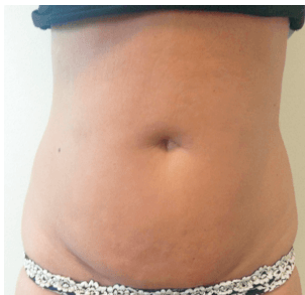
The results from some diets and fat reduction treatments will leave you swinging back and forth between "before" and "after" versions of yourself. But the Cool-Shaping procedure is a non-surgical, safe and effective way to reduce unwanted fat. So take a good, long look at yourself.

Who is the Candidate?

1. Practice suits for both men and women who may trend to show fat in different areas.
2. Practice suits for areas where you want to remove stubborn fat.
3. Practice suits for those people who want to get rid of stubborn bulges with zero downtime.



Before



After



Before



After

SPECIFICATION

SILICE EVO	
Infrared Light	37℃~42℃
Cool-Shaping Temp	5℃~-11℃
Vacuum	10~80Kpa
LED Light	Red (630nm) Green (570nm) 50mW×4
HPS Size	220*80mm & 160*60mm & 130*50mm&80*40mm
Cooling System	Wind+Water
Power Supply	AC220V 50Hz/AC110V 60Hz
Working Temperature	+15℃~+30℃
Storage Temperature	-20℃~+55℃
Relative Humidity	≤80%
Atmospheric Pressure	86kPa~106kPa

